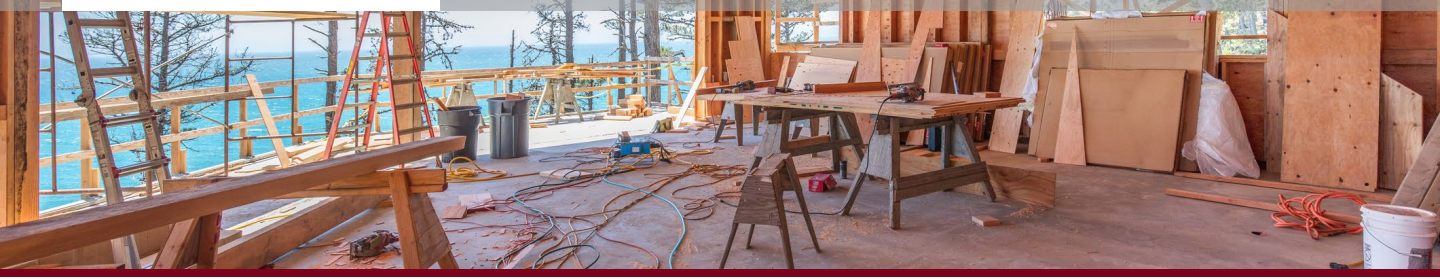




# BUILDERS RISK

Palomar Specialty Insurance Company

Admitted A- (VIII) by A.M. Best Company



## ☑ Capacity:

- ◆ Capacity: Up to \$10 Million
- ◆ \$5 Million Frame Construction
- ◆ Perils: Fire, Wind and Earthquake

## ☑ Eligible States:

- ◆ AL, AZ, CA, CT, GA, HI, MO, NC, SC, TN, TX & UT  
(Commercial and Residential)
- ◆ Texas - Tier 1 and Tier 2 only  
(Commercial)

## ☑ Target Occupancies:

- ◆ Single Family / Custom Homes
- ◆ Condominiums / Townhomes
- ◆ Residential Renovations
- ◆ Light Commercial Buildings

## ☑ Eligibility:

- ◆ General Contractor with a minimum of 2 years of experience
- ◆ Protection Class 1-6
- ◆ 4 stories and under
- ◆ Barrier islands and beachfront acceptable

## ☑ Minimum Premium & Fees:

- ◆ Minimum Premium: \$400
- ◆ Fees vary by state
- ◆ Direct Bill and Agency Bill options

### Submission Mailbox:

Homeowner@Kinginsuranceca.com

Commercial: CL@kinginsuranceca.com